

# Announcement

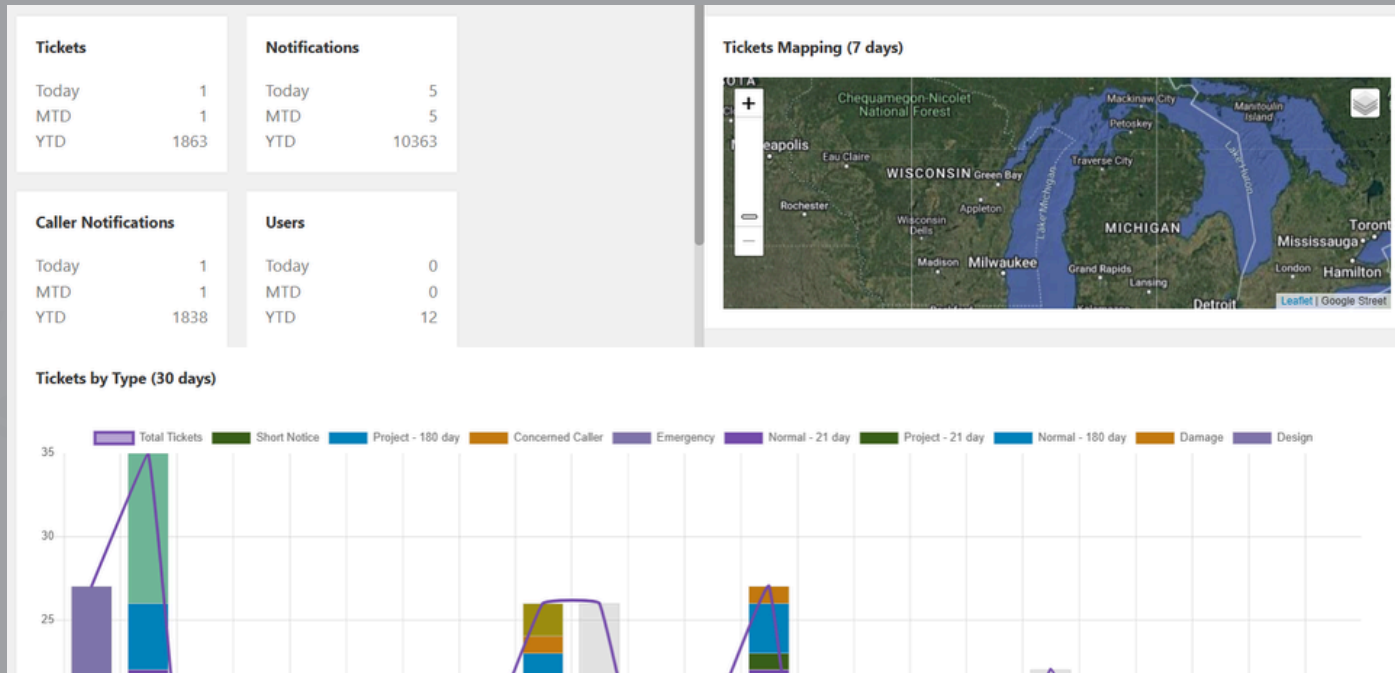
# SYSTEM UPDATE

MISS DIG 811 will undergo a system update early morning on 04/10/2025.

Updates to the DamagePreventionPortal (DPP) interface will be taking place! We hope these changes enhance your user experience and make portal navigation clearer.

## Dashboards:Overview

- Module will be activated in DPP
- Displays data associated with your stations
  - Intended for a real-time general analysis of your information; not reporting tool



## User Role-Specific Landing Pages

- Landing page upon login will be customized for each user role type
- No more unnecessary error messages
- Only modules the user role has access to will populate

DPP User Account Type	DPP Landing Page
Authority Viewer/+	Settings:OneCallAccess
Positive Response Posting/+	Operations:PositiveResponse
Member Admin/+	Settings:OneCallAccess
Explore Your Data/+	Operations:ExploreYourData
Member Full/+	Settings:System
State Manager	Operations:ExploreYourData