

In the Trenches



Where's your Bobblehead?

Thousands of MISS DIG 811 bobbleheads have been handed out and are hanging out in municipal offices, facility owner headquarters, and excavating companies around the state of Michigan. If you have one, take a picture of your MISS DIG 811 bobblehead wherever you have it. We want YOU to send US the picture anytime between October 1st and January 31st, which we'll share in upcoming newsletters and on our social media pages. With the holidays coming up, there are plenty of fun photo ops ahead as we begin this state-wide bobblehead hunt!



Include the location details like your company name or city office and email to: education@missdig811.org. The best picture location that gets submitted will win a \$50 Amazon gift card, courtesy of MISS DIG 811. Join in the fun and let us know every place in the state of Michigan that MISS DIG 811 is getting your support.



Community Outreach

Subscriptions & Area of Interest (AOI)

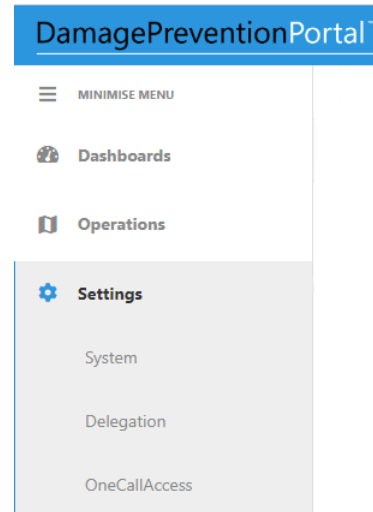
As the dig season nears its conclusion, I highly recommend to all Facility Owner/Operators that use the Damage Prevention Portal (DPP) to take some time to explore what's available within it. One thing I've been doing when I stop at municipalities & other members around the state is to show them where they can find their listing of ticket subscriptions & their Area of Interest (AOI).

Subscriptions tell you how & where your tickets are being delivered to. The subscriptions can either be receiving tickets by email (for all types of tickets) or by telephone thru our IVR (for emergency locates only). It's important to take a look at these, as it's common for people to make changes to their often-outdated subscriptions once we review them when I stop in to discuss our Pelican system & Public Act 174.

Your Area of Interest or AOI shows you on a map where you are currently being notified for each of your facilities. Since members are billed on a transmission-basis, some members like to keep their AOI as tight as possible, so they avoid receiving a bunch of tickets that end up getting marked 001-NO CONFLICT. On the other hand, some municipal facility owner/operators want to receive all tickets in their municipality. The reason they prefer that is so they can keep tabs on work that may require some type of permit, like putting on a house or building addition, or installing a fence. Whenever I talk with a municipal facility owner/operator, I like to show them their AOI, and discuss these two different viewpoints.

To find where your subscriptions or your AOI is located within the Damage Prevention Portal (DPP), you'll need to click the **SETTINGS** button located on the main page of your portal, & then click One Call Access (see highlighted image right).

If you don't have a **SETTINGS** button, you may need to upgrade the type of DPP that you have. You can do that by clicking this



link: <https://fs30.formsite.com/missdig/form27/index.html> or by calling Member Support at 800-482-7161.

Click the button below for the rest of the article

Subscriptions & AOI ... continued

For questions please reach out to the Community Outreach Department at externalaffairs@missdig811.org or 248-370-6422

Web Ticket Department



OneCallAccess Forum

The OCA Forum topic for November is:
Working along Roads & Intersections
Wednesday, November 30th at 9:00 AM

Registration: In MISS DIG 811's Online Education Site (aka SkillBuilder) Under MISS DIG 811 Tools and Programs, OneCallAccess in your learning plan.

<https://missdig811.skillbuilder.co/sign-in>

Contact the Web Ticket Department at webticketdept@missdig811.org with questions.

To register for an OCA tutorial webinar,
click the SkillBuilder link below:

<https://missdig811.skillbuilder.co/sign-in>

Webinar dates for November:

Tuesday 1st, 9:00 AM - 11:00 AM

Thursday 10th, 9:00 AM - 11:00 AM

Monday 14th, 1:00 PM - 3:00 PM

Wednesday 16th, 9:00 AM - 11:00 AM

Tuesday 29th, 9:00 AM - 10:00 AM

For questions please reach out to the Web Ticket Department
at webticketdept@missdig811.org or 248-370-6420

The Member Services Department



MISSDIG811[®]

ONLINE EDUCATION

The Member Services
Department has been working
hard to provide our users with



SkillBuilder[®]LMS

thorough, accurate resources and are excited to announce that member training will be available on SkillBuilder this month! Learning paths for each of our DamagePreventionPortal account user types will be offered. Upon availability, new users will be assigned training as account promotion requests are received and existing users will receive general notice. Those with Member Full/+, Member Admin/+, and AuthorityViewer accounts will be asked to complete required learning paths within an allotted timeframe. For updated guides and additional resources, visit resources.missdig811.org. Contact the Member Services Department at membersupport@missdig811.org with any questions.

For questions please reach out to the Member Services Department
at membersupport@missdig811.org or 1-800-482-7161

The Education Department



Looking for Training? The MISS DIG 811 Education Team can help!

With the digging season winding down, now is a good time to schedule off-season training or plan ahead to early spring for onboarding crews for the 2023 excavating season. An Education Specialist can cover Public Act 174 and Safe Digging Practices with your team and prepare them for a safe digging season. We offer all types of safety courses to educate and keep your crews and facilities safe. Contact the Education Department to schedule training: education@missdig811.org

- Safe Education Practices
- Public Act 174
- Tool Box Talks
- Field Basics
- Damage Safety Alliances
- Maintain the Marks

- Michigan Marine Safety
- Education Mobile Unit for events



MtM in the news!



The MtM, Maintain the Marks, program will be added as a course to the Lawrence Technological University's curriculum. The course will be offered as part of the LTU curriculum beginning in the spring of 2023 for college credit. Students can earn up to 58 Continuing Education Credits in this class for several licensures. Education Specialist, Harry Carr, will teach the course. For more information, please contact Education Specialist Harry Carr at:

hcarr@missdig811.org



Dig season is slowing down so now is the perfect time to take advantage of MISS



DIG 811 Maintain the Marks Locate Training. As you may not have already known, participation in this two-week training is free of charge. It's the perfect skill to verify the marks placed at your job sites by the locate company (USIC). Kyle Perk from Michigan's west side is looking for some mid-November/early December classmates. If interested, please reach out to Harry Carr @ hcarr@missdig811.com or call him at (248) 370-6444.



For questions please reach out to the Education Department at education@missdig811.org or 248-724-5851

Notification Center

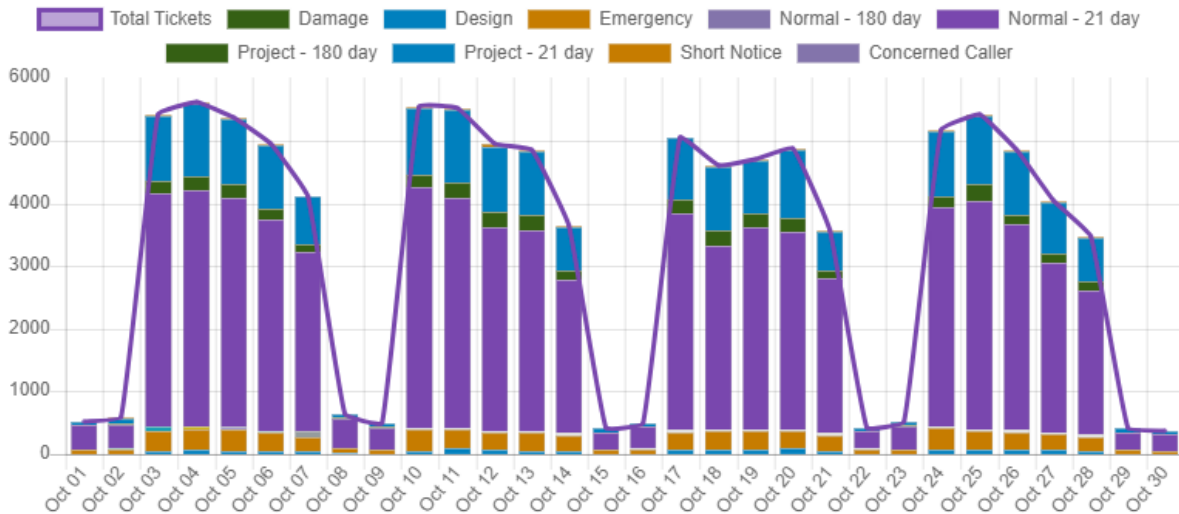


By the numbers:

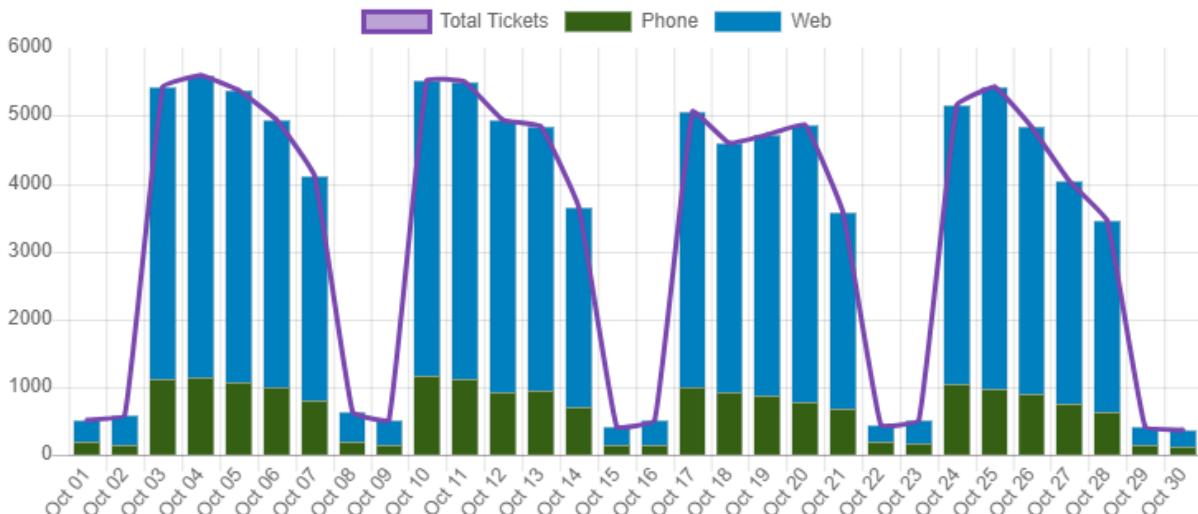
Month to date: 105,090 tickets placed as of October 31st, at 5:00 PM

Year to date: 961,039 tickets have been placed

Tickets by Type (30 days)



Tickets by Medium (30 days)



For questions please reach out to the Notification Center at
1-800-482-7171

The Digging World



Click the graphic above
for more information



Social Media

November Contest

Thanksgiving is a time of lots of food and the question of what to do with all the leftovers. Please share how you use Thanksgiving leftovers. We'll show our thanks for the best entry by giving the winner a Pyrex glass food storage set.



Follow MISS DIG 811 on social media by clicking on the links below. every month the MISS DIG 811 Socia Media Team is giving away great prizes, so please participate and you can win too!





The MISS DIG 811 Network



Be sure to check out 'What's The 811?' and 'Dig It' two MISS DIG 811 original video series and the podcast 'Diggin In' all featured on our social media pages. Follow us on Twitter, Facebook, or LinkedIn to see more. Click on the icons below. Enjoy and share the latest videos on the social media platforms. New episodes of 'What's the 811?' are posted every Wednesday.

If you see the Man On The Street, go ahead and test out your MISS DIG 811 knowledge on "What's The 811?" and when you get your boots off after the work day, tune into an episode of 'Dig It'.



Mark
YOUR CALENDAR Continuing Education Credits

JANUARY
17

*note: MISS DIG 811 Annual Meeting
2 days @ Soaring Eagle Casino*

It's the year of the member!!
Facility owner/operator members and their use of the system will be the primary focus.

Safe Digging Advocate Award

The winner of the Safe Digging Advocate Award will receive:

A trophy, MISS DIG 811 SWAG, and a trip to the annual meeting for 2, including hotel, meals, and mileage. Place your vote by clicking the icon above.



Nominations must be received by January, 1st.

Quick Links

Some quick links are available to access the ticket entry platform and to view resources:

- OCA.MISSDIG811.ORG -Log-in page for OneCallAccess
 - DPP.MISSDIG811.ORG - Log-in page for the Damage Prevention Portal for members.
 - REFERENCE.MISSDIG811.ORG -Resource page for excavators. Here users can find user guides, best practices, ticket types, scope of work guidelines, announcements, and more.
 - RESOURCES.MISSDIG811.ORG -Resource page for members that includes manuals, guides, and forms.
 - POS.R.MISSDIG811.ORG - Shows the Positive Response posting to the most recent version of a ticket
-

